

**PolymAb™ antibodies –
Meet your experimental needs in multiple dimensions**



PolymAb™ antibody is a mixed monoclonal antibody. We select high-quality SAb™ recombinant rabbit monoclonal antibodies for the same target but recognize different epitopes, and mix them in a specific ratio. All of our PolymAb™ antibodies have been verified and optimized by multiple strict validations and have following benefits:

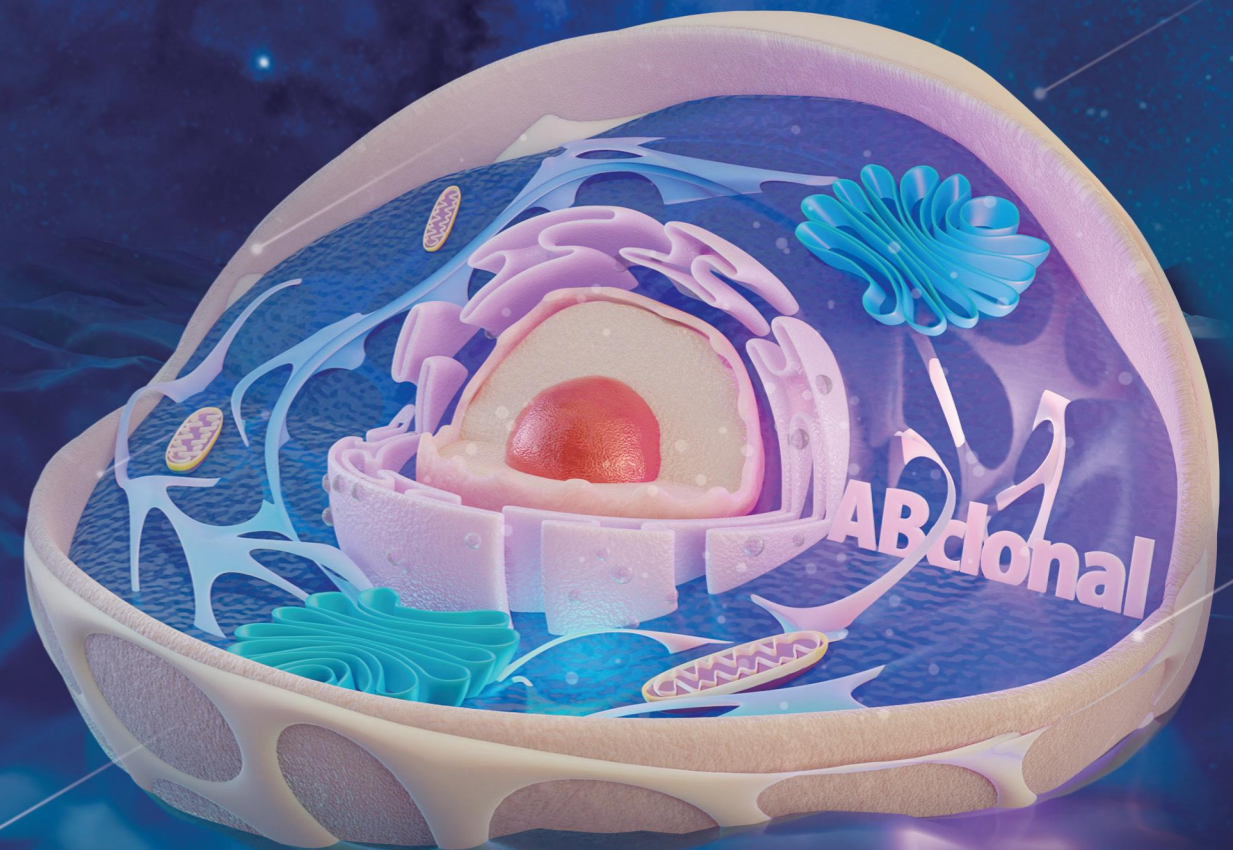
Board range of applications and species

Lot-to-lot consistency, good reproducibility

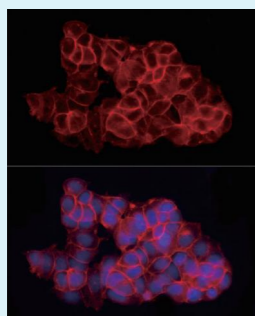
High sensitivity, recognize multiple epitopes

Organelle	Cat.No.	Product Name	Application	Reactivity
Cell membrane	A22596	ICAM-1/CD54 Rabbit PolymAb™	IF/ICC,IHC,WB	Human, Mouse, Rat
	A22465	CD79B Rabbit PolymAb™	IF/ICC,IHC,WB	Human, Mouse, Rat
	A22645	CD79A Rabbit PolymAb™	IF/ICC,IHC,WB	Human, Mouse, Rat
Nucleus	A22460	CDKN1A/p21 Rabbit PolymAb™	IF/ICC,WB	Human, Mouse
Cytoplasm & Nucleus	A22464	AHR Rabbit PolymAb™	IF/ICC,IHC,WB	Human, Mouse
Cytoplasm	A22462	Fatty Acid Synthase (FASN) Rabbit PolymAb™	IF/ICC,WB	Human, Mouse, Rat
	A22529	AIF1/IBA1 Rabbit PolymAb™	IF/ICC,IHC,WB	Human, Mouse, Rat
	A22531	ALDH1A1 Rabbit PolymAb™	IF/ICC,IHC,WB	Human, Mouse, Rat
Cell membrane & Cell junction	A22599	Integrin-β1/CD29 Rabbit PolymAb™	IF/ICC,IHC,WB	Human, Mouse
Cell junction	A22988	E-Cadherin Rabbit PolymAb™	IF/ICC,IHC,WB	Human, Mouse, Rat
Adherens junction	A23135	FRS2 Rabbit PolymAb™	IF/ICC,IHC,WB	Human, Mouse, Rat
Cytoplasm & Peroxisome	A22647	Xanthine Oxidase (XDH) Rabbit PolymAb™	IF/ICC,IHC,WB	Human, Mouse, Rat

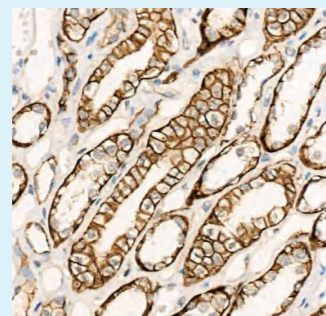
Organelle Marker Antibodies



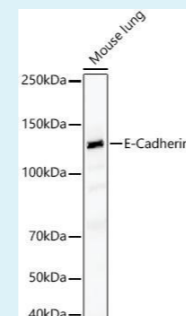
E-Cadherin Rabbit PolymAb™ (A22988)



IF, MCF7 cell



IHC, Human Kidney



WB, Mouse lung tissue

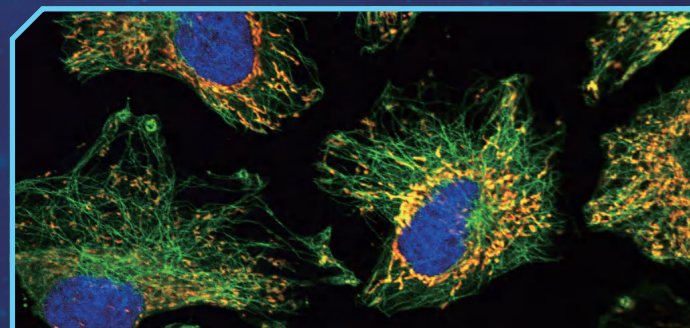
An organelle is a specialized structure that has one or more specific jobs to perform in the cell, much like an organ does in the body. A eukaryotic cell contains many organelles, for example, the mitochondria, endoplasmic reticulum, nucleus, Golgi apparatus, microtubules, microfilaments and centrosomes, etc. Organelle markers (markers) that refer to proteins or other markers that are specifically expressed on certain organelles are important research tools in the study of biological processes allowing assessment of distribution, subcellular localization, and co-localization of target proteins.

ABclonal aims to provide professional and reliable products and services for scientists studying life science basic research, translational medicine, diagnosis, and pharmaceuticals. To achieve this goal, ABclonal recruited an expert team and established a single B cell-based antibody development platform - S^Mab™.

ABclonal has years of experience in high-quality antigen expression technology and high-throughput antibody screening technology, combining with our antibody evaluation system and other auxiliary platforms, ABclonal has the capability to develop '10,000+ targets' high affinity and high specificity recombinant rabbit monoclonal antibodies with diverse application and species. This project is called "10,000+ targets recombinant rabbit mAb plan"

Since the launch of the project, ABclonal has developed and manufactured more than 3,000 kinds of rabbit mAb for the global market that can be used in ChIP/ChIP-Seq/Cut-tag/IP/IF/IHC/WB, flow cytometry, pathology, multiplex, immunodiagnostic raw materials, etc. Here we especially recommend high-quality rabbit monoclonal antibodies for immunofluorescence applications.

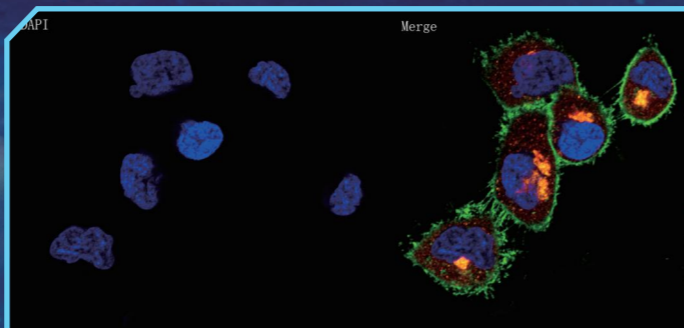
Mitochondria/Cytoskeleton



Confocal imaging of HeLa cells using

[KO Validated] HK1 Rabbit mAb (A0533, dilution 1:100) (Red). The cells were counterstained with Alpha-tubulin (ubiquitous) chain Rabbit mAb (AC039, dilution 1:100) (Green). DAPI was used for nuclear staining (Blue).

Golgi Apparatus/Plasma Membrane



Confocal imaging of HeLa cells using CD44 Rabbit mAb

(A21919, dilution 1:200) (Green). The cells were counterstained with COPB2 Rabbit mAb (A22381, dilution 1:100) (Red). DAPI was used for nuclear staining (Blue).

Recommended rabbit monoclonal antibodies

Organelle	Cat.No.	Product Name	Application	Reactivity
Mitochondria	A11214	ATPB Rabbit mAb	IF/ICC,IHC,WB	Human,Mouse,Rat
	A0564	HSP60/HSPD1 Rabbit mAb	IF/ICC,IHC,WB	Human,Mouse,Rat
	A11217	ATP5A1 Rabbit mAb	IF/ICC,IHC,WB,IP	Human,Mouse,Rat
	A19707	VDAC1 Rabbit mAb	IF/ICC,IHC,WB	Human,Mouse,Rat
	A0533	[KO Validated] HK1 Rabbit mAb	IF/ICC,IHC,WB,IP	Human,Mouse,Rat
Endoplasmic reticulum	A12411	AGR2 Rabbit mAb	IF/ICC,WB	Human,Mouse,Rat
	A4260	PDIA6 Rabbit mAb	IF/ICC,WB	Human,Mouse,Rat
Golgi apparatus	A20950	USO1 Rabbit mAb	IF/ICC,IHC,WB	Human,Mouse,Rat
	A11408	GM130 Rabbit mAb	IF/ICC,IHC,WB	Human,Mouse,Rat

Nuclear envelope	A5001	Lamin B2 Rabbit mAb	IF/ICC,IHC,WB	Human,Mouse,Rat
	A4187	Emerin/EMD Rabbit mAb	IF/ICC,IHC,WB	Human,Mouse,Rat
Nucleolus	A0850	Fibrillarin/U3 RNP Rabbit mAb	IF/ICC,WB	Human,Mouse,Rat
Cell membrane	A21919	CD44 Rabbit mAb	IF/ICC,IHC,WB,FC	Human
	A11683	Na ⁺ /K ⁺ -ATPase Rabbit mAb	IF/ICC,IHC,WB	Human,Mouse,Rat
Cytoskeleton	A3736	Desmin Rabbit mAb	IF/ICC,WB	Human,Mouse,Rat
	A9776	Cytokeratin 1 Rabbit mAb	IF/ICC,IHC,WB	Human,Mouse,Rat
	A0013	Cytokeratin 4 Rabbit mAb	IF/ICC,IHC,WB	Human,Mouse,Rat
	A11396	Cytokeratin 5 Rabbit mAb	IF/ICC,IHC,WB	Human,Mouse,Rat
	A19607	[KO Validated] Vimentin Rabbit mAb	IF/ICC,IHC,WB,IP	Human,Mouse,Rat
Endosome	A3251	RAB11A Rabbit mAb	IF/ICC,WB	Human,Mouse,Rat
	A4943	Clathrin heavy chain Rabbit mAb	IF/ICC,IHC,WB,IP	Human,Mouse,Rat
	A12308	RAB7 Rabbit mAb	IF/ICC,WB	Human,Mouse,Rat
	A4894	RAB9A Rabbit mAb	IF/ICC,IHC,WB	Human,Mouse,Rat

Recommended fluorescent secondary antibodies

Cat.No.	Product Name	Application
AS055	ABflo™ 405-conjugated Goat Anti-Mouse IgG (H+L)	IF/ICC,FC
AS056	ABflo™ 405-conjugated Goat Anti-Rabbit IgG (H+L)	IF/ICC,FC
AS073	ABflo™ 488-conjugated AffiniPure Goat Anti-Rabbit IgG (H+L)	IF/ICC,FC
AS035	ABflo™ 488-conjugated Donkey Anti-Rabbit IgG (H+L)	IF/ICC,FC
AS037	ABflo™ 488-conjugated Goat Anti-Mouse IgG (H+L)	IF/ICC,FC
AS053	ABflo™ 488-conjugated Goat Anti-Rabbit IgG (H+L)	IF/ICC,FC
AS057	ABflo™ 555-conjugated Goat Anti-Mouse IgG (H+L)	IF/ICC,FC
AS058	ABflo™ 555-conjugated Goat Anti-Rabbit IgG (H+L)	IF/ICC,FC
AS074	ABflo™ 594-conjugated AffiniPure Goat Anti-Rabbit IgG (H+L)	IF/ICC,FC
AS054	ABflo™ 594-conjugated Goat Anti-Mouse IgG (H+L)	IF/ICC,FC
AS039	ABflo™ 594-conjugated Goat Anti-Rabbit IgG (H+L)	IF/ICC,FC
AS086	ABflo™ 647 AffiniPure Fab Goat Anti-Rabbit IgG, (Fc)	IF/ICC,FC
AS078	ABflo™ 647-conjugated AffiniPure Goat Anti-Mouse IgG (H+L)	IF/ICC,FC
AS075	ABflo™ 647-conjugated AffiniPure Goat Anti-Rabbit IgG (H+L)	IF/ICC,FC
AS059	ABflo™ 647-conjugated Goat Anti-Mouse IgG (H+L)	IF/ICC,FC
AS060	ABflo™ 647-conjugated Goat Anti-Rabbit IgG (H+L)	IF/ICC,FC
AS068	ABflo™ 647-conjugated Rabbit Anti-Rat IgG (H+L)	IF/ICC,FC
AS072	ABflo™ 750-conjugated Goat Anti-Rabbit IgG (H+L)	IF/ICC,FC