



Technology®

Leader in Biomolecular Solutions for Life Science



# ABclonal Antibody Topseller

Monoclonal | Polyclonal | Phosphorylated | Acetylated | Methylated

ABclonal offer over 15,000 monoclonal and polyclonal primary antibodies based on different antibody development platforms. Our quickly expanded antibody portfolios will provide you wide choice for targets and empower your research in cutting-edges of life science. Our catalog antibodies can be used in popular research areas such as epigenetics, DNA damage/repair, cancer, and immunology, etc.

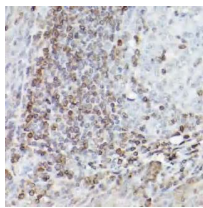
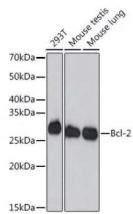
## Programmed Cell Death Antibodies

Recombinant Rabbit mAbs

### A19693 Bcl-2 Rabbit mAb

Application: WB, IHC, IP  
Reactivity: Human, Mouse, Rat

Citation (16)

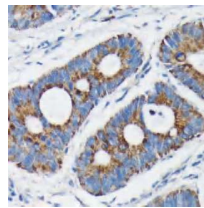


Human tonsil

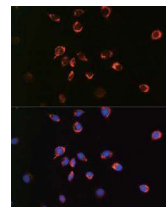
### A19684 [KO Validated] Bax Rabbit mAb

Application: WB, IHC, IF  
Reactivity: Human, Mouse, Rat

Citation (21)



human colon carcinoma

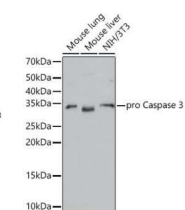
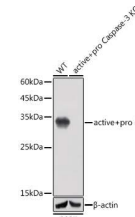


L929 cells

### A19654 [KO Validated] active + pro Caspase-3 Rabbit mAb

Application: WB  
Reactivity: Human, Mouse, Rat

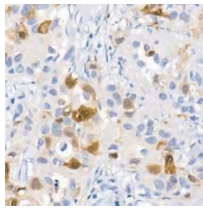
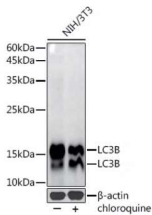
Citation (32)



### A19665 [KO Validated] LC3B Rabbit mAb

Application: WB, IHC, IF, IP  
Reactivity: Human, Mouse, Rat

Citation (21)

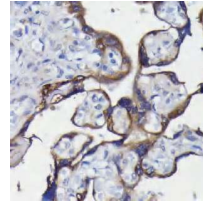
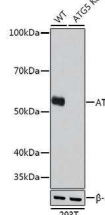


Human brain

### A19677 [KO Validated] ATG5 Rabbit mAb

Application: WB, IHC, IP  
Reactivity: Human, Mouse, Rat

Citation (2)

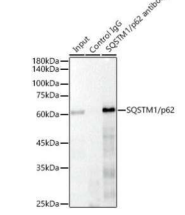
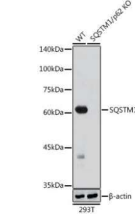


Human placenta

### A19700 [KO Validated] SQSTM1/p62 Rabbit mAb

Application: WB, IHC, IF, IP  
Reactivity: Human, Mouse, Rat

Citation (18)

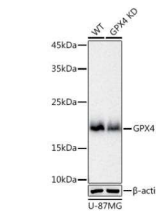
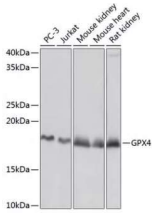


293T cells

### A11243 [KD Validated] GPX4 Rabbit mAb

Application: WB, IP  
Reactivity: Human, Mouse, Rat

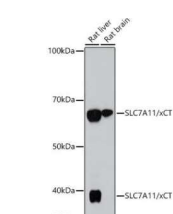
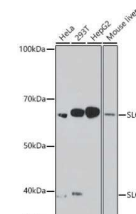
Citation (8)



### A2413 SLC7A11/xCT Rabbit mAb

Application: WB  
Reactivity: Human, Mouse, Rat

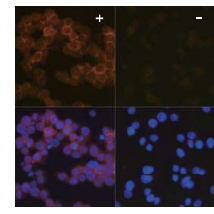
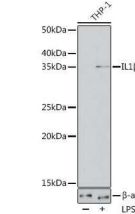
Citation (17)



### A19635 IL1β Rabbit mAb

Application: WB, IF  
Reactivity: Human, Mouse

Citation (6)



THP-1 cells

ZY-A-22Sep2-CN01

# IHC/Pathology Antibodies

Recombinant

Rabbit mAbs

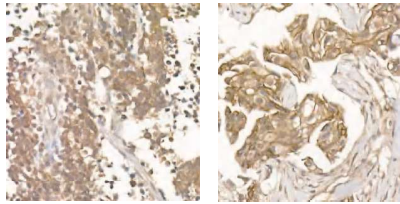
Pathological

KO Validated

## A19657 [KO Validated] $\beta$ -Catenin Rabbit mAb

Application: WB, IHC, IF, IP  
Reactivity: Human, Mouse, Rat

Citation(17)



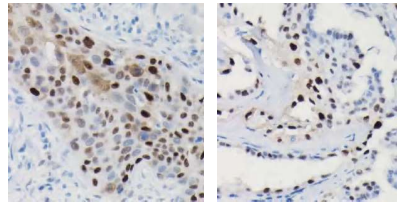
Human small cell lung cancer

Human breast cancer

## A19038 [KO Validated] Cyclin D1 Rabbit mAb

Application: WB, IHC, IF, IP  
Reactivity: Human, Mouse, Rat

Citation(25)



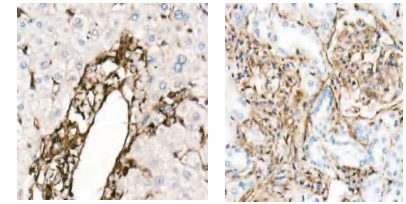
Human esophageal cancer

Human thyroid cancer

## A19607 [KO Validated] Vimentin Rabbit mAb

Application: WB, IHC, IF, IP  
Reactivity: Human, Mouse, Rat

Citation(19)



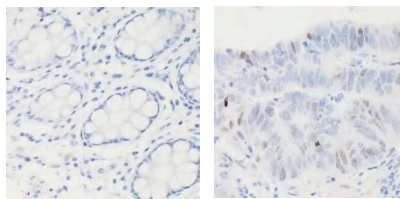
Human liver

Human kidney

## A19585 [KO Validated] p53 Rabbit mAb

Application: WB, IHC, IP  
Reactivity: Human, Rat

Citation(2)



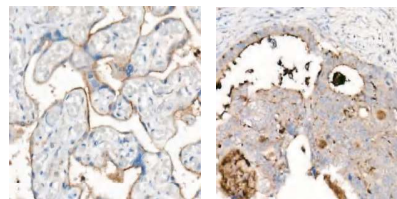
Human colon  
(Negative control sample)

Human colon carcinoma

## A19023 CD63 Rabbit mAb

Application: WB, IHC  
Reactivity: Human, Mouse, Rat

Citation(7)



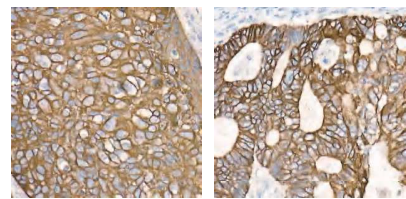
Human placenta

Human colon carcinoma

## A19040 Cytokeratin 19 (KRT19) Rabbit mAb

Application: WB, IHC, IF  
Reactivity: Human, Mouse, Rat

Citation(3)



Human esophageal cancer

Human colon carcinoma

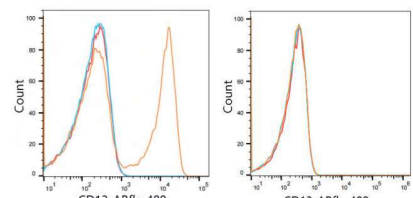
# Direct Flow Cytometry Antibodies

Recombinant

Rabbit mAbs

## A21944 ABflo™ 488 Rabbit anti-Human CD13/ANPEP mAb

Application: FC  
Reactivity: Human

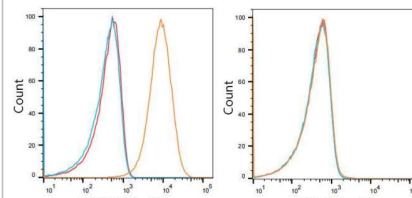


Human PBMC

Jurkat cells (negative control)

## A21938 ABflo™ 488 Rabbit anti-Human CD40 mAb

Application: FC  
Reactivity: Human

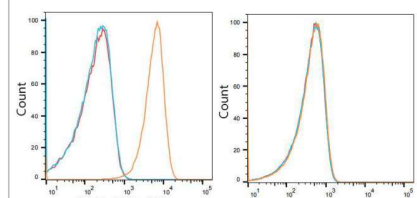


Raji cells

Jurkat cells (negative control)

## A21937 ABflo™ 488 Rabbit anti-Human CD48 mAb

Application: FC  
Reactivity: Human

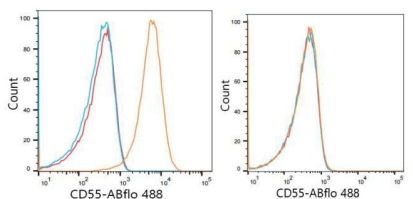


Human PBMC

K562 cells (negative control)

## A21942 ABflo™ 488 Rabbit anti-Human CD55 mAb

Application: FC  
Reactivity: Human

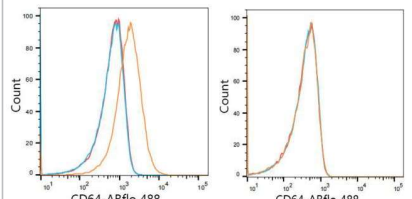


K562 cells

SH-SY5Y cells (negative control)

## A21939 ABflo™ 488 Rabbit anti-Human CD64 mAb

Application: FC  
Reactivity: Human

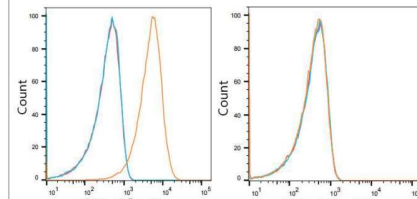


THP-1 cells

K562 cells (negative control)

## A21940 ABflo™ 488 Rabbit anti-Human CD86 mAb

Application: FC  
Reactivity: Human



Raji cells

K562 cells (negative control)

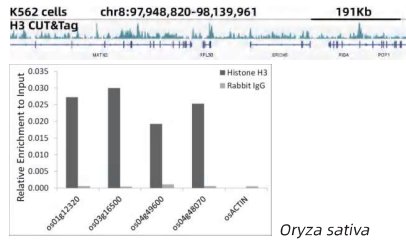
# Epigenetics Antibodies

Recombinant Rabbit mAbs

## A17562 Histone H3 Rabbit mAb

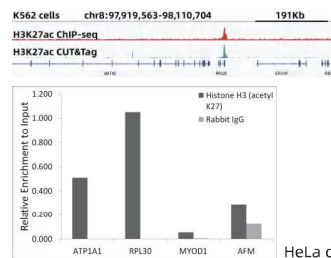
Application: WB, IHC, IF, CHIP, CUT&Tag  
 Reactivity: Human, Mouse, Rat, *Oryza sativa*

Citation(4)



## A2771 Acetyl-Histone H3-K27 Rabbit mAb

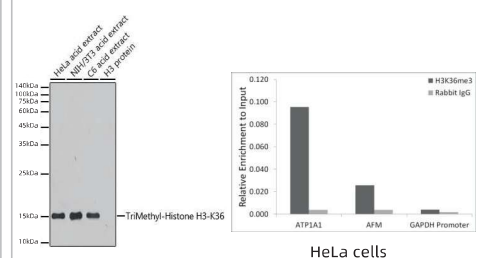
Application: DB, WB, IHC, IF, Chip, CUT&Tag  
 Reactivity: Human, Mouse, Rat



## A20379 TriMethyl-Histone H3-K36 Rabbit mAb

Application: DB, WB, CHIP  
 Reactivity: Human, Mouse, Rat

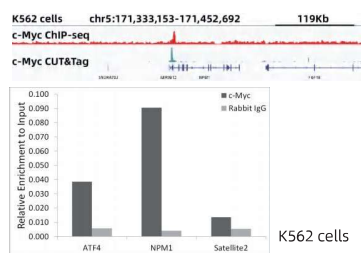
Citation(1)



## A19032 [KO Validated] c-Myc Rabbit mAb

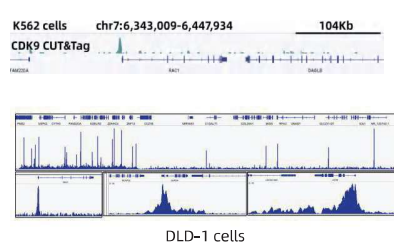
Application: WB, IF, Chip, CUT&Tag  
 Reactivity: Human, Mouse

Citation(3)



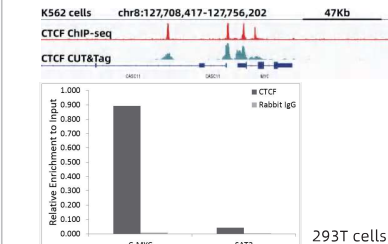
## A11145 [KO Validated] CDK9 Rabbit mAb

Application: WB, IHC, IF, IP, Chip-Seq, CUT&Tag  
 Reactivity: Human, Mouse, Rat



## A19588 CTCF Rabbit mAb

Application: WB, IF, IP, Chip, CUT&Tag  
 Reactivity: Human, Mouse, Rat



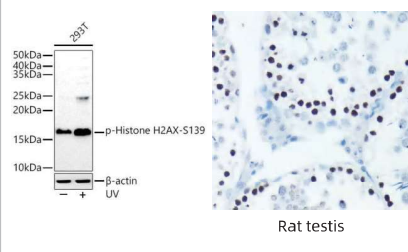
# DNA Damage & Repair Antibodies

Recombinant Rabbit mAbs

## AP0687 Phospho-Histone H2AX-S139 Rabbit mAb

Application: WB, IHC, IF  
 Reactivity: Human, Mouse

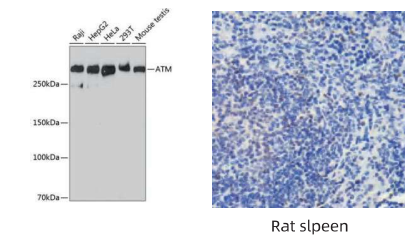
Citation(4)



## A19650 ATM Rabbit mAb

Application: WB, IHC  
 Reactivity: Human, Mouse, Rat

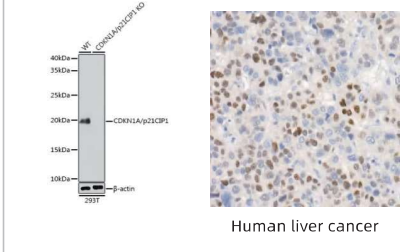
Citation(6)



## A19094 [KO Validated] CDKN1A/p21CIP1 Rabbit mAb

Application: WB, IHC  
 Reactivity: Human, Mouse, Rat

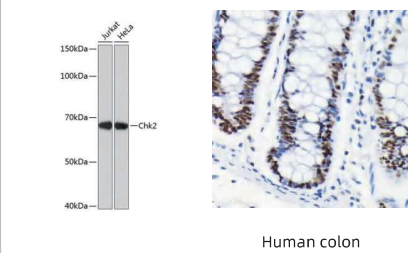
Citation(3)



## A19543 Chk2 Rabbit mAb

Application: WB, IHC  
 Reactivity: Human

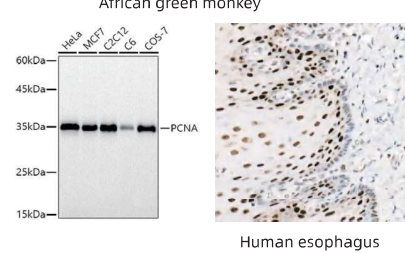
Citation(3)



## A12427 PCNA Rabbit mAb

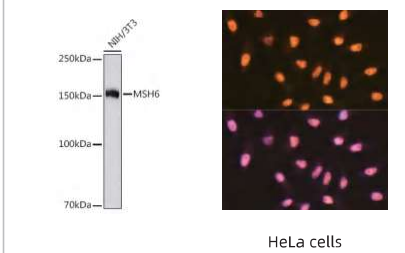
Application: WB, IHC, IP  
 Reactivity: Human, Mouse, Rat, African green monkey

Citation(9)



## A8795 MSH6 Rabbit mAb

Application: WB, IF  
 Reactivity: Human, Mouse



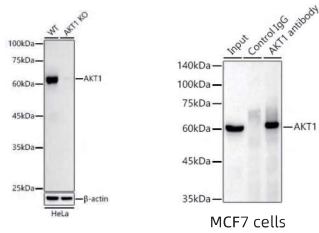
# Cell Metabolism Antibodies

Recombinant Rabbit mAbs

## A17909 [KO Validated] AKT1 Rabbit mAb

Application: WB, IHC, IF, IP  
Reactivity: Human, Mouse, Rat

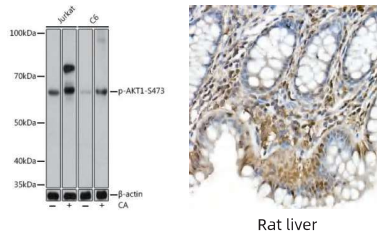
Citation(23)



## AP0637 Phospho-AKT1-S473 Rabbit mAb

Application: WB, IHC  
Reactivity: Human, Mouse, Rat

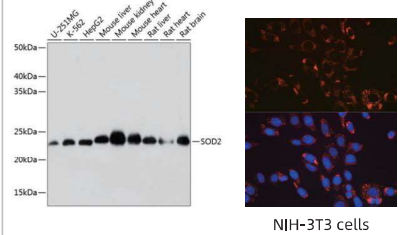
Citation(15)



## A19576 SOD2 Rabbit mAb

Application: WB, IHC, IF  
Reactivity: Human, Mouse, Rat

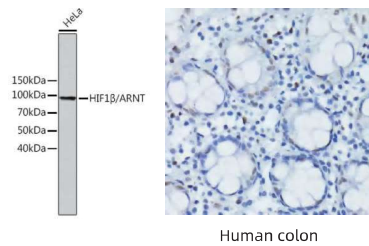
Citation(1)



## A19532 HIF1β/ARNT Rabbit mAb

Application: WB, IHC  
Reactivity: Human

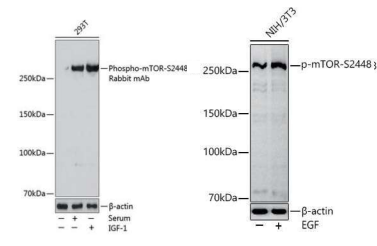
Citation(1)



## AP0115 Phospho-mTOR-S2448 Rabbit mAb

Application: WB  
Reactivity: Human, Mouse, Rat

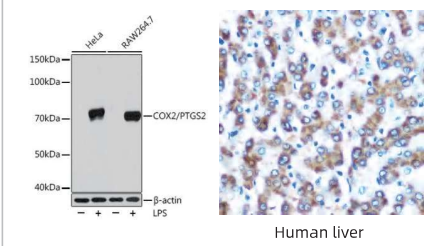
Citation(5)



## A3560 COX2/PTGS2 Rabbit mAb

Application: WB, IHC  
Reactivity: Human, Mouse, Rat

Citation(1)



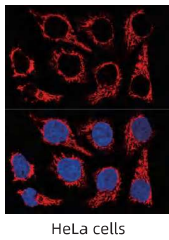
# Subcellular Localization Antibodies

Recombinant Rabbit mAbs

## A19403 TOM20 Rabbit mAb

Application: WB, IHC, IF, IP  
Reactivity: Human, Mouse, Rat

Citation(6)

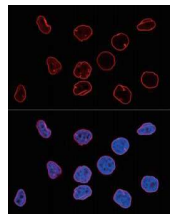


HeLa cells

## A19524 [KO Validated] Lamin A/C Rabbit mAb

Application: WB, IHC, IF, IP  
Reactivity: Human, Mouse, Rat

Citation(4)

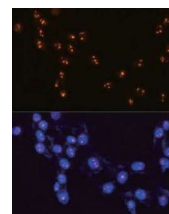


HeLa cells

## A0850 Fibrillarin/U3 RNP Rabbit mAb

Application: WB, IF  
Reactivity: Human, Mouse, Rat

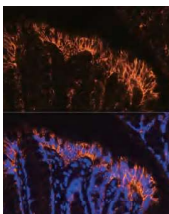
Citation(4)



NIH-3T3 cells

## A19301 EpCAM Rabbit mAb

Application: WB, IHC, IF  
Reactivity: Human, Mouse, Rat

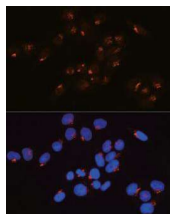


Rat rectum

## A11408 GM130 Rabbit mAb

Application: WB, IHC, IF  
Reactivity: Human, Mouse, Rat

Citation(1)

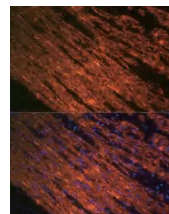


HeLa cells

## A17910 α-Smooth Muscle Actin (ACTA2) Rabbit mAb

Application: WB, IHC, IF  
Reactivity: Human, Mouse, Rat

Citation(28)



Human colon carcinoma

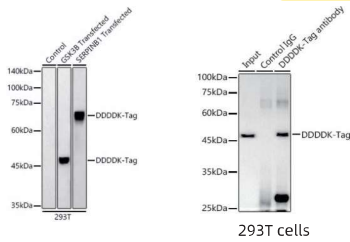
## Tag Antibodies

Recombinant Rabbit mAbs

### AE092 DDDDk-Tag Rabbit mAb

Application: WB, IF, IP, FC

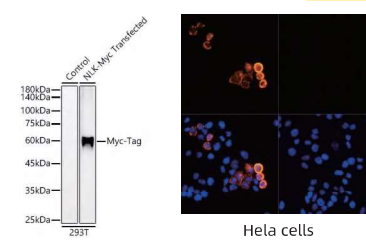
Citation (4)



### AE070 Myc-Tag Rabbit mAb

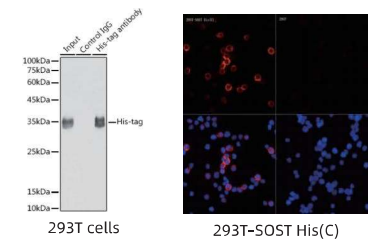
Application: WB, IF, IP, FC

Citation (7)



### AE086 Rabbit anti His-tag mAb

Application: WB, IF, IP



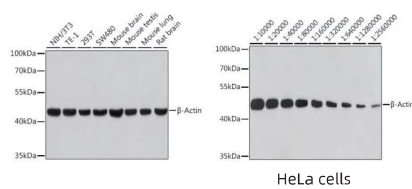
## Loading Control Antibodies

Recombinant mAbs

### AC026 $\beta$ -Actin Rabbit mAb (High Dilution)

Application: WB  
Reactivity: Human, Mouse, Rat, Chicken, Zebrafish, Pig

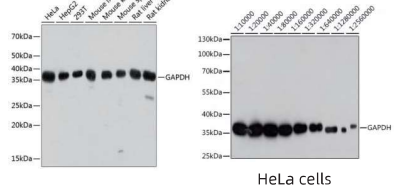
Citation (743)



### AC033 GAPDH Mouse mAb (High Dilution)

Application: WB, IHC, IF  
Reactivity: Human, Mouse, Rat

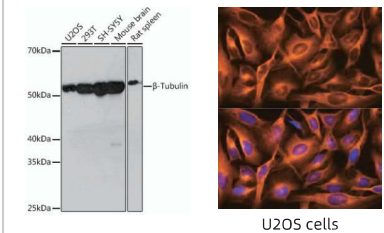
Citation (117)



### A12289 $\beta$ -Tubulin Rabbit mAb

Application: WB, IF, IP  
Reactivity: Human, Mouse, Rat

Citation (10)



## ABclonal Topseller (Partial)

Classification	Cat.No.	Product Name	Application	Reactivity
Direct Flow Cytometry	A21944	ABflo™ 488 Rabbit anti-Human CD13/ANPEP mAb	FC	Human
	A21938	ABflo™ 488 Rabbit anti-Human CD40 mAb	FC	Human
	A21937	ABflo™ 488 Rabbit anti-Human CD48 mAb	FC	Human
	A21942	ABflo™ 488 Rabbit anti-Human CD55 mAb	FC	Human
	A21939	ABflo™ 488 Rabbit anti-Human CD64 mAb	FC	Human
	A21940	ABflo™ 488 Rabbit anti-Human CD86 mAb	FC	Human
IHC/Pathology	A19657	[KO Validated] $\beta$ -Catenin Rabbit mAb	WB, IHC, IF, IP	Human, Mouse, Rat
	A19038	[KO Validated] Cyclin D1 Rabbit mAb	WB, IHC, IF, IP	Human, Mouse, Rat
	A19607	[KO Validated] Vimentin Rabbit mAb	WB, IHC, IF, IP	Human, Mouse, Rat
	A19585	[KO Validated] p53 Rabbit mAb	WB, IHC, IP	Human, Rat
	A19023	CD63 Rabbit mAb	WB, IHC	Human, Mouse, Rat
	A19040	Cytokeratin 19 (KRT19) Rabbit mAb	WB, IHC, IF	Human, Mouse, Rat
Programmed Cell Death	A19693	Bcl-2 Rabbit mAb	WB, IHC, IP	Human, Rat
	A19684	[KO Validated] Bax Rabbit mAb	WB, IHC, IF	Human, Mouse, Rat
	A19654	[KO Validated] active + pro Caspase-3 Rabbit mAb	WB	Human, Mouse, Rat
	A19665	[KO Validated] LC3B Rabbit mAb	WB, IHC, IF, IP	Human, Mouse, Rat
	A19677	[KO Validated] ATG5 Rabbit mAb	WB, IHC, IP	Human, Mouse, Rat
	A19700	[KO Validated] SQSTM1/p62 Rabbit mAb	WB, IHC, IF, IP	Human, Mouse, Rat
	A11243	[KD Validated] GPX4 Rabbit mAb	WB, IP	Human, Mouse, Rat
	A2413	SLC7A11/xCT Rabbit mAb	WB	Human, Mouse, Rat
Epigenetics	A19635	IL1 $\beta$ Rabbit mAb	WB, IF	Human, Mouse
	A17562	Histone H3 Rabbit mAb	WB, IHC, IF, ChIP, CUT&Tag	Human, Mouse, Rat, <i>Oryza sativa</i>
	A2771	Acetyl-Histone H3-K27 Rabbit mAb	DB, WB, IHC, IF, ChIP, CUT&Tag	Human, Mouse, Rat
	A20379	TriMethyl-Histone H3-K36 Rabbit mAb	DB, WB, ChIP	Human, Mouse, Rat
A19032	[KO Validated] c-Myc Rabbit mAb	WB, IF, ChIP, CUT&Tag	Human, Mouse	

Classification	Cat.No.	Product Name	Application	Reactivity
Epigenetics	A11145	[KO Validated] CDK9 Rabbit mAb	WB, IHC, IF, IP, ChIP-seq, CUT&Tag	Human, Mouse, Rat
	A19588	CTCF Rabbit mAb	WB, IF, IP, ChIP, CUT&Tag	Human, Mouse, Rat
DNA Damage	AP0687	Phospho-Histone H2AX-S139 Rabbit mAb	WB, IHC, IF	Human, Mouse, Rat
	A19650	ATM Rabbit mAb	WB, IHC	Human, Mouse, Rat
	A19094	[KO Validated] CDKN1A/p21CIP1 Rabbit mAb	WB, IHC	Human, Mouse, Rat
	A19543	Chk2 Rabbit mAb	WB, IHC	Human
	A12427	PCNA Rabbit mAb	WB, IHC, IP	Human, Mouse, Rat, African green monkey
	A8795	MSH6 Rabbit mAb	WB, IF	Human, Mouse, Rat
Cell Metabolism	A17909	AKT1 Rabbit mAb	WB, IHC, IF, IP	Human, Mouse, Rat
	AP0637	Phospho-AKT1-S473 Rabbit mAb	WB, IHC	Human, Mouse, Rat
	A19576	SOD2 Rabbit mAb	WB, IHC, IF	Human, Mouse, Rat
	A19532	HIF1 $\beta$ /ARNT Rabbit mAb	WB, IHC	Human
	AP0115	Phospho-mTOR-S2448 Rabbit mAb	WB	Human, Mouse, Rat
	A3560	COX2/PTGS2 Rabbit mAb	WB, IHC	Human, Mouse, Rat
Subcellular Localization	A19403	TOM20 Rabbit mAb	WB, IHC, IF, IP	Human, Mouse, Rat
	A19524	[KO Validated] Lamin A/C Rabbit mAb	WB, IHC, IF, IP	Human, Mouse, Rat
	A0850	Fibrillarin/U3 RNP Rabbit mAb	WB, IF	Human, Mouse, Rat
	A19301	EpCAM Rabbit mAb	WB, IHC, IF	Human, Mouse, Rat
	A11408	GM130 Rabbit mAb	WB, IHC, IF	Human, Mouse, Rat
	A17910	$\alpha$ -Smooth Muscle Actin (ACTA2) Rabbit mAb	WB, IHC, IF	Human, Mouse, Rat
Tag Antibody	AE092	DDDDK-Tag Rabbit mAb	WB, IF, IP, FC	-
	AE070	Myc-Tag Rabbit mAb	WB, IF, IP, FC	-
	AE086	Rabbit anti His-tag mAb	WB, IF, IP	-
Loading Control Antibody	AC026	$\beta$ -Actin Rabbit mAb (High Dilution)	WB	Human, Mouse, Rat, Chicken, Zebrafish, Pig
	AC033	GAPDH Mouse mAb (High Dilution)	WB, IHC, IF	Human, Mouse, Rat
	A12289	$\beta$ -Tubulin Rabbit mAb	WB, IF, IP	Human, Mouse, Rat,

## ABclonal Citations (Partial)

- C. Jian et al., Low-Dose Sorafenib Acts as a Mitochondrial Uncoupler and Ameliorates Nonalcoholic Steatohepatitis. *Cell Metab* 31, 892-908 e811 (2020).  
**Phospho-mTOR-S2448 Rabbit mAb (AP0115)** **WuHan University**
- X. Q. Gao et al., The piRNA CHAPIR regulates cardiac hypertrophy by controlling METTL3-dependent N(6)-methyladenosine methylation of Parp10 mRNA. *Nat Cell Biol* 22, 1319-1331 (2020).  
**PCNA Rabbit mAb (A12427)** **Qingdao Medical College**
- N. Dumauthioz et al., Enforced PGC-1 $\alpha$  expression promotes CD8 T cell fitness, memory formation and antitumor immunity. *Cell Mol Immunol* 18, 1761-1771 (2021).  
 **$\beta$ -Actin Rabbit mAb (High Dilution) (AC026)** **University of Lausanne, Switzerland**
- H. Cheng et al., Naked mole-rat brown fat thermogenesis is diminished during hypoxia through a rapid decrease in UCP1. *Nat Commun* 12, 6801 (2021).  
**TOM20 Rabbit mAb (A19403)** **University of Ottawa, Canada**
- H. Lin et al., Hyperpolyploidization of hepatocyte initiates preneoplastic lesion formation in the liver. *Nat Commun* 12, 645 (2021).  
**Phospho-Histone H2AX-S139 Rabbit mAb (AP0687)** **Taipei Medical University**
- D. Li et al., A T-cell independent universal cellular therapy strategy through antigen depletion. *Theranostics* 12, 1148-1160 (2022).  
**[KO Validated] AKT1 Rabbit mAb (A17909)** **Shanghai Jiaotong University**
- T. Gui et al., TCF3 is epigenetically silenced by EZH2 and DNMT3B and functions as a tumor suppressor in endometrial cancer. *Cell Death Differ* 28, 3316-3328 (2021).  
 **$\beta$ -Tubulin Rabbit mAb (A12289)** **Nanjing University**
- X. Jie et al., USP9X-mediated KDM4C deubiquitination promotes lung cancer radioresistance by epigenetically inducing TGF- $\beta$ 2 transcription. *Cell Death Differ* 28, 2095-2111 (2021).  
**ATM Rabbit mAb (A19650)** **Tongji Medical College**
- Y. Zhang et al., SPATA33 is an autophagy mediator for cargo selectivity in germline mitophagy. *Cell Death Differ* 28, 1076-1090 (2021).  
**[KO Validated] SQSTM1/p62 Rabbit mAb (A19700)** **Renmin hospital of Wuhan university**
- L. Gu et al., Targeting Cpt1a-Bcl-2 interaction modulates apoptosis resistance and fibrotic remodeling. *Cell Death Differ* 29, 118-132 (2022).  
**[KO Validated] Vimentin Rabbit mAb (A19607)** **University of Alabama at Birmingham**
- H. Zhang et al., DEAD-Box Helicase 18 Counteracts PRC2 to Safeguard Ribosomal DNA in Pluripotency Regulation. *Cell Rep* 30, 81-97 e87 (2020).  
**[KO Validated] Vimentin Rabbit mAb (A19607)** **Tsinghua University**
- R. Fan, J. Sui, X. Dong, B. Jing, Z. Gao, Wedelolactone alleviates acute pancreatitis and associated lung injury via GPX4 mediated suppression of pyroptosis and ferroptosis. *Free Radic Biol Med* 173, 29-40 (2021).  
**[KO Validated] GPX4 Rabbit mAb (A11243)** **The Second Affiliated Hospital of Dalian Medical University**